

Features		Caratteristiche		Merkmale		Caractéristiques	
-----------------	--	------------------------	--	-----------------	--	-------------------------	--

<p>Connection by screwing together the two parts.</p> <p>Disconnection by pulling back the female safety sleeve and unscrew.</p> <p>Shut off by flat valve</p> <p>Connectable with male part under residual pressure (35MPa-5075PSI) without using tools</p> <p>Disconnection under pressure allowed</p> <p>Interchangeability according to FASTER internal Standards</p> <p>No spillage during Connexion and Disconnection</p> <p>Female part equipped with axial rotation adapters.</p> <p>Mating threads heat treated and made to Rd profile.</p> <p>High volume flow and reduced pressure drop is ensured by specially designed components.</p>	<p>Connessione avvitando maschio e femmina.</p> <p>Disconnessione mediante arretramento ghiera di sicurezza della parte femmina e svitare.</p> <p>Sistema di tenuta mediante valvole a faccia piana</p> <p>Maschi innestabili con pressione residua (35MPa-5075PSI), senza l'ausilio di chiavi / utensili.</p> <p>Disconnessione in pressione consentita</p> <p>Intercambiabilità secondo Norma interna FASTER</p> <p>Assenza di spillaggio durante connessione e disconnessione</p> <p>Parte femmina equipaggiata con adattatori liberi in rotazione assiale.</p> <p>Fillettì di connessione a profilo Rd trattati termicamente</p> <p>Elevata protata grazie ai profili interni speciali per ridurre perdite di carico.</p>	<p>Verbindung durch Verschrauben der beiden Teile</p> <p>Entkuppeln durch zurückschieben der Sicherheitsschiebehülse</p> <p>Schließen durch flache Ventile</p> <p>Unter Restdruck kuppelbar (35MPa-5075PSI) ohne Verwendung von Werkzeugen</p> <p>Entkuppeln unter Druck erlaubt</p> <p>Austauschbarkeit FASTER internen Standard</p> <p>Kein Leckage während des Kuppel und Entkuppelvorgangs</p> <p>Muffe mit axialem Drehhapter ausgestattet</p> <p>Verbindungsgewinde als Rundgewinde</p> <p>Hoher Durchfluß, gewährleistet bei niedrigem Druchverluste durch Spezialtechnik</p>	<p>Connexion en dévissant les deux parties</p> <p>Déconnexion en tirant la bague de sécurité femelle et dévisser</p> <p>Clapet à Face Plane</p> <p>Connexion possible avec une pression résiduelle dans la partie Mâle (35MPa-5075PSI), sans utiliser d'outils</p> <p>Déconnexion sous pression possible</p> <p>Interchangeabilité conformément à la norme interne FASTER</p> <p>Pas fuite lors de la connexion et la déconnexion</p> <p>La partie femelle possède des adaptateurs libres en rotation axiale</p> <p>Filetage de connexion avec un profilé RD traité thermiquement</p> <p>Haut débit grâce aux profils internes spécifiques qui réduisent les pertes de charge</p>
---	---	--	---

Fields of application
 Settori di applicazione
 Anwendungsbereiche
 Domaines d'application

Size Base BG Taille	Max Working pressure Max pressione di esercizio Betriebsdruck Pression de service	Flow Rate Portata Durchflussmenge Débit	Min Burst Pressures Min Pressione di scoppio Berstdruck Pression d'éclatement
----------------------------	--	--	--

mm	inch.	MPa (PSI)	MPa (PSI)	MPa (PSI)	l/min (GPM)	MPa (PSI)	MPa (PSI)	MPa (PSI)
06	3/8"	35 (5075)	46 (6650)	46 (6650)	32 (9)	140 (20300)	140 (20300)	150 (23200)
08	1/2"	46 (6650)	46 (6650)	53 (7690)	70 (19)	160 (23200)	160 (23200)	150 (23200)
20	3/4"	35 (5075)	46 (6650)	46 (6650)	120 (32)	140 (20300)	140 (20300)	150 (23200)
25	1"	46 (6650)	35 (5075)	46 (6650)	200 (53)	140 (20300)	140 (20300)	150 (23200)
40	1-1/2"	35 (5075)	35 (5075)	40 (5800)	420 (111)	160 (23200)	140 (20300)	150 (23200)
50	2"	30 (4350)	30 (4350)	35 (5075)	750 (198)	80 (11600)	100 (14500)	120 (17400)

	Technical Specifications	Specifiche Tecniche	Technische Daten	Caractéristiques Techniques
	FEMELLE: high grade steel carbonitrided wearing parts MALE: high grade carbon steel induction hardened	FEMMINA: in acciaio con parti sollecitate carbonitrate MASCHIO: in acciaio al carbonio temprato ad induzione	MUFFE: Hochwehrtiger Karbonnitritstahl in besonders beanspruchten Zonen STECKER: Hochwehrtiger Karbonstahl induktionsgehärtet	FEMELLE: Acier avec zones d'usure carbonitrurées MALE: acier à hauts teneur trempés par induction
	Polyurethane and NBR Backup ring in PTFE	Polyuretano e NBR Anello antiest-usione PTFE	Polyurethan und NBR Stützring in PTFE	Polyuréthane et NBR Anneau anti-extrusion en PTFE
	-25°C to +100°C (-13°F to +212°F)	-25°C a +100°C (-13°F a +212°F)	-25°C bis +100°C (-13°F bis +212°F)	-25°C à +100°C (-13°F à +212°F)
	Mate1000	Mate1000	Mate1000	Mate1000
	100.000 cycles at max rated working pressure disconnected 1.000.000 cycles at max. rated working pressure connected	100.000 cicli alla massima pressione d'esercizio ad innesti disconnessi 1.000.000 di cicli alla massima pressione d'esercizio ad innesti connessi	100.000 Impulse mit maximalem Arbeitsdruck entkuppelt 1.000.000 Impulse mit maximalem Arbeitsdruck gekuppelt	100.000 cycles à la pression de service maximal, déconnecté 1.000.000 de cycles à la pression de service maxima connecté

Thread Adapter - Adattatore Filetato - Gewindeadapter - Raccordement Fileté

Size Base BG Taille	Part Number Codice Articolo Artikelnummer Désignation	Female Femmina Muffe Femelle	Male Maschio Stecker Male	Thread Filetto Anschluss Filetage		B	C	L	D	H	X / Y	J	Weight Peso Gewicht Poids	Package Confezione Verpackung Colis
				A	E									
mm	inch.	mm (in)	mm (in)	mm (in)	mm (in)	mm (in)	mm (in)	mm (in)	mm (in)	mm (in)	mm (in)	mm (in)	g (lbs)	No.
10	3/8"	FHV06 38GAS F	FHV06 38GAS M	3/8" BSP Female	3/8" BSP Female	102	97	167.5	48	33	34/30	45		
12.5	1/2"	FHV08 12GAS F	FHV08 12GAS M	1/2" BSP Female	1/2" BSP Female	110	109.5	186	55	44.5	41/36	52		
20	3/4"	FHV12 34GAS F	FHV12 34GAS M	3/4" BSP Female	3/4" BSP Female	129.5	122.5	214	64	54.5	46/46	60		
20	3/4"	FHV12 34SAE F	FHV12 34SAE M	1 1/16" UN Female	1 1/16" UN Female	129.5	122.5	214	64	54.5	46/46	60		
25	1"	FHV16 1GAS F	FHV16 1GAS M	1" BSP Female	1" BSP Female	138	144	240	74	64	55/55	70		
25	1"	FHV16 114GAS F	FHV16 114GAS M	1-1/4" BSP Female	1-1/4" BSP Female	138	144	240	74	64	55/55	70		
25	1"	FHV16 114NPT F	FHV16 114NPT M	1-1/4" NPTF Female	1-1/4" NPTF Female	138	144	240	74	64	55/55	70		
25	1"	FHV16 1SAE F	FHV16 1SAE M	1-5/16" UN Female ORB	1-5/16" UN Female ORB	138	144	240	74	64	55/55	70		
40	1-1/2"	FHV24 112GAS F	FHV24 112GAS M	1-1/2" BSP Female	1-1/2" BSP Female	171	187	308.5	100	84.5	65/75	95		
40	1-1/2"	FHV24 112NPT F	FHV24 112NPT M	1-1/2" NPTF Female	1-1/2" NPTF Female	171	187	308.5	100	84.5	65/75	95		
50	2"	FHV32 2NPT F	FHV32 2NPT M	2" NPTF Female	2" NPTF Female	200	237	375.5	130	115	85/85	120		

ISO A - ISO B - Standard
 ISO A - ISO B - Standard
 ISO A - ISO B - Standard
 ISO A - ISO B - Standard
 ISO A - ISO B - Standard

Agriculture
 Agriculture
 Agriculture
 Agriculture

Screw Together
 Schraubkupplungen
 A Visser

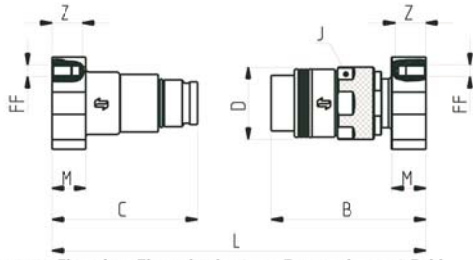
Check Valves
 Valvole Unidirezionali
 Rückschläventile
 Clapet Anti-retour

Diagnostic
 Diagnostik
 Diagnostik
 Diagnostik

Flat Face
 Innesti a faccia piana
 Flächichtend
 Clapet à Face Plat

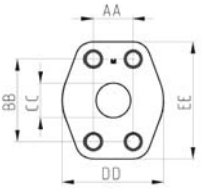
Multifaster
 Multikupplungen
 Multifaster

Multifaster
 Multikupplungen
 Multifaster

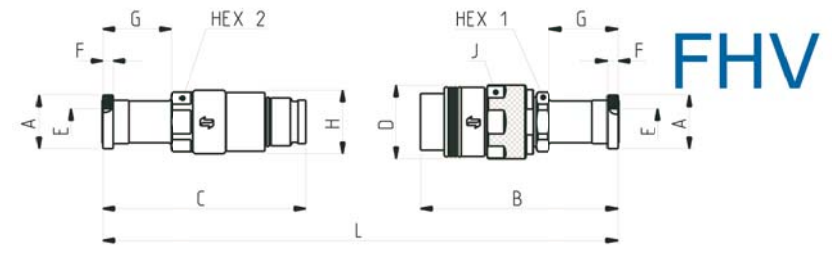


Flange Adapter - Adattatore con Flangia - Flanschadapter - Reccordement Bride (ISO 6162-2)

Size Base BG Taille		Female Femmina Muffa Femelle	Male Maschio Stecker Male	B	C	L	D	H	M	Z	FF	Weight Peso Gewicht Poids	Package Confezione Verpackung Coils
mm	inch.			mm (in)	mm (in)	mm (in)	mm (in)	mm (in)	mm (in)	mm (in)	Metric	g (lbs)	No.
25	1"	FHV16-44/16 F	FHV16-44/16 M	158 (6.22)	151 (5.94)	267 (10.51)	70 (2.76)	64 (2.52)	35 (1.38)	23.5 (0.93)	4*M12x1.75		
25	1"	FHV16-44/20 F	FHV16-44/20 M	158 (6.22)	151 (5.94)	267 (10.51)	70 (2.76)	64 (2.52)	35 (1.38)	20.5 (0.81)	4*M12x1.75		
40	1-1/2"	FHV24-44/24 F	FHV24-44/24 M	192 (7.56)	197 (7.76)	340 (13.39)	95 (3.74)	83 (3.27)	46 (1.81)	27.5 (1.08)	4*M16x2		
50	2"	FHV32-44/32 F	FHV32-44/32 M	230 (9.06)	253 (9.96)	427 (16.81)	122 (4.80)	115 (4.53)	50 (1.97)	35 (1.38)	4*M20x2.5		



Size Base BG Taille		Female Femmina Muffa Femelle	Male Maschio Stecker Male	BB	AA	CC	EE	DD
mm	inch.			mm (in)	mm (in)	mm (in)	mm (in)	mm (in)
25	1"	FHV16-44/16 F	FHV16-44/16 M	57.2 (2.25)	27.8 (1.09)	25 (0.98)	81 (3.19)	70 (2.76)
25	1"	FHV16-44/20 F	FHV16-44/20 M	66.6 (2.62)	31.8 (1.25)	32 (1.26)	95.2 (3.75)	78 (3.07)
40	1-1/2"	FHV24-44/24 F	FHV24-44/24 M	79.3 (3.12)	36.5 (1.44)	38 (1.50)	112.8 (4.44)	95 (3.74)
50	2"	FHV32-44/32 F	FHV32-44/32 M	96.8 (3.81)	44.5 (1.75)	51 (2.00)	132.8 (5.23)	114 (4.49)



Flange Head Adapter - Codolo per Flangia - Flanschstelleradapter - Fixation raccordement Bride (ISO 6162-2)

Size Base BG Taille		Female Femmina Muffa Femelle	Male Maschio Stecker Male	A	B	C	L	D	H	E	F	G	HEX 1	HEX 2	Weight Peso Gewicht Poids	Package Confezione Verpackung Coils
mm	inch.			mm (in)	mm (in)	mm (in)	mm (in)	mm (in)	mm (in)	mm (in)	mm (in)	mm (in)	mm (in)	mm (in)	g (lbs)	No.
25	1"	FHV16-76/16 F	FHV16-76/16 M	47.6 (1.87)	191 (7.52)	198 (7.80)	347 (13.66)	70 (2.76)	64 (2.52)	25 (0.98)	9.5 (0.37)	62 (2.44)	55 (2.17)	55 (2.17)		
25	1"	FHV16-76/20 F	FHV16-76/20 M	54 (2.13)	198 (7.80)	205 (8.07)	361 (14.21)	70 (2.76)	64 (2.52)	32 (1.26)	10.3 (0.41)	69 (2.72)	55 (2.17)	55 (2.17)		
40	1-1/2"	FHV24-76/24 F	FHV24-76/24 M	63.5 (2.50)	236 (9.29)	247 (9.72)	434 (17.09)	95 (3.74)	83 (3.27)	38 (1.50)	12.6 (0.50)	79 (3.11)	65 (2.56)	75 (2.95)		
50	2"	FHV32-76/32 F	FHV32-76/32 M	79.4 (3.13)	288 (11.34)	332 (13.07)	558 (21.97)	122 (4.80)	115 (4.53)	51 (2.00)	12.6 (0.50)	95 (3.74)	85 (3.35)	85 (3.35)		

Accessories - Accessori - Zubehör - Accessoires

Size Base BG Taille	Dust protections Tappi Protezione Staubschutzteile Capuchons	Dust protections Tappi Protezione Staubschutzteile Capuchons
	Aluminum	Aluminum
mm	inch.	Part Number Codice Articolo Artikelnummer Désignation
25	3/4"	
25	1"	TF FHV16 S
40	1-1/2"	TF FHV24 S
50	2"	TF FHV32 S

Thread Filetto Anschluss Filetage



ISO A - ISO B - Standard
ISO A - ISO B - Standard
ISO A - ISO B - Standard
ISO A - ISO B - Standard

Agricoltura
Agriculture
Ausführung Agrartechnik
Agricuture

Screw Together
Tornare a Vite
Schaubkupplungen
A Visser

Clapet Valves
Valvole Unidirezionali
Rückschlagventile
Clapet Anti-retour

Diagnostic
Diagnostico
Diagnostik Kupplung
Diagnostic

Flat Face
Imnesti a Piana
Flächichtend
Clapet à Face Plat

Multifaster
Multifunctional
Multikupplungen
Multifaster

Check Valves
Valvole Unidirezionali
Rückschlagventile
Clapet Anti-retour

Diagnostic
Diagnostico
Diagnostik Kupplung
Diagnostic

Flat Face
Imnesti a Piana
Flächichtend
Clapet à Face Plat

Multifaster
Multifunctional
Multikupplungen
Multifaster